



A Weekly Update
For The Employees of
North Central Health Care



NEWS YOU CAN USE



WEEKLY CONNECTION WITH LANCE LEONHARD

It is an honor to have the opportunity to address each of you this month. And, I hope this message finds you in high spirits as we continue to embrace the beauty and warmth that spring has begun to offer. The growth that comes each spring gives us a wonderful opportunity to celebrate the gifts of the present and to reflect upon the past.

Here at NCHC, our present is particularly exciting. We are moving into the final stages of our construction projects. Our teams will be entering into new spaces and we will be restarting a number of programs, each of which will help us fulfill our Mission of **providing compassionate and high-quality care for individual and families** under our care. And, each day our team members are doing extraordinary things across our organization. The Mount View Care Center was recently recognized for their exceptional performance during their state review. Our Finance team's attention to detail received high praise from our auditors. And, across our team we are focused on helping each other through living our core values each day. I've been so proud of our commitment to living our core value of **ACCOUNTABILITY**...remembering that we all have a hand in helping each other be successful.

In closing, I would be remiss if I didn't—in this last *News You Can Use* before Memorial Day—take the opportunity to encourage everyone to take time to pause and reflect. Memorial Day is a solemn reminder of the sacrifices made by countless men and women in service to our country. Our lives, and the freedoms we enjoy, are possible due to the selfless acts of these brave men and women. I hope that each of us are able gather with family, to reflect, and to express our gratitude for those that have paid the ultimate measure of devotion to others.

Thank you for all you do on behalf of our community.

With sincere gratitude,

Lance Leonhard
Marathon County Administrator

Welcome Our
New Employees! 2

Green As Grass for
Ramp Training! 3

Events of Interest 4-5

Wausau Campus Updates... 6

HR Insights..... 7

Scrub Sale at MVCC..... 8

Foodie Forecast 9-10

Person-Centered
**Shout
out**



**Ronda
Rydbom,
Guest Services**

Thank you for covering
for an unplanned shift
for a coworker.

From:
Laura Wendorf



Occurrence Reporting Hotline

x4488 or 715.848.4488



Only significant or sentinel events requiring immediate notification to this hotline.



WELCOME THESE *New Employees* TO THE TEAM!

These employees were welcomed at Orientation May 15-19!

Lakeside Recovery Mount View Crisis Services Youth Hospital



Magen Malueg –
AODA Counselor



Abigail Martin –
CNA



Sierra Smith –
Crisis Professional



Makayla Schilling –
Behavioral Health
Professional I

Safety & Security Community Treatment - Antigo Residential Services



Chelsea Lehmann –
Safety & Security
Officer



Elisabeth Ferdon –
Case Manager II



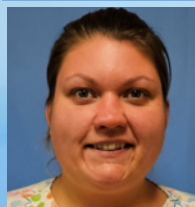
Sadie Blohowiak –
Personal Care
Worker



Hailey Taylor –
Personal Care
Worker

Food Services - Wausau Team

Merrill Team



Lindsey Franz –
Dietary Aide



Paige Wirth –
Dietary Aide



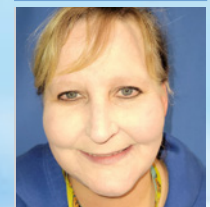
Lyndsay Cigel –
Dietary Aide



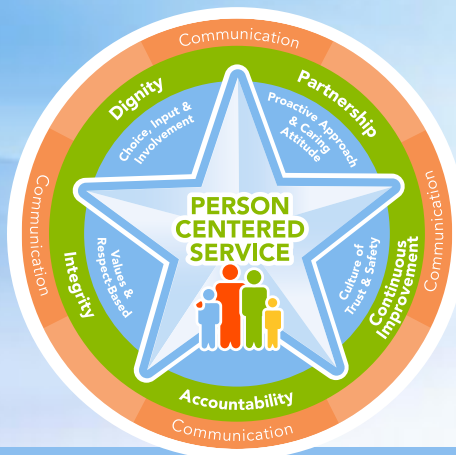
Jared Cook –
Dietary Aide



Katherine Sims –
Dietary Aide



Dana Knapp –
Dietary Aide



We are so excited to have you on our team!



PHOTOS OF THE WEEK



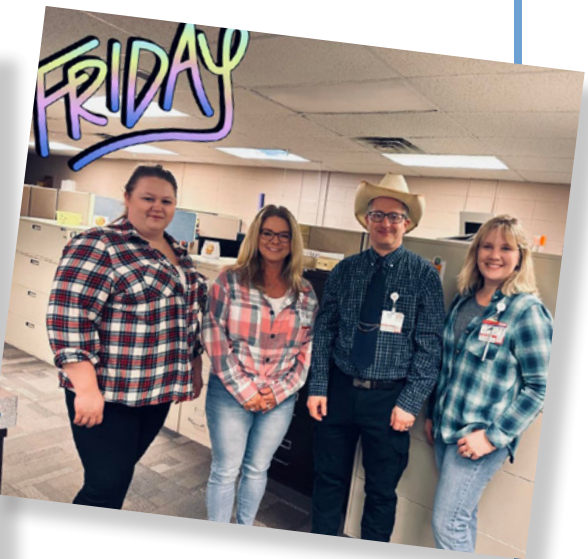
Person-Centered Service in Action: Ramp Training?



When the Mount View Care Center team was confronted with a challenge, they called upon employees from across the Wausau Campus to help....and employees showed up in a big GREEN way. Last week, as we celebrated Spirit Week in honor of Nursing Home Week, our teams donned their favorite green attire for Green as Grass Day. Check out this group of "greenies" as they gathered for "ramp training" at Mount View! These employees from all over Wausau Campus will respond to requests for assisting our nursing home residents getting to and from the 2nd floor of Mount View Care Center for activities elsewhere on the Campus. What would take activities staff about 45 minutes, will now take much less time with the assistance from these employees!



NCHC SPIRIT WEEK
CELEBRATING
NATIONAL SKILLED NURSING CARE WEEK
MAY 15 - 19, 2023





Community EVENTS

<https://www.unitedwaymc.org/community-data>

2023 LIFE Report Release

Thursday June 1st

8:00am: Check in & networking
8:30am: Forum begins

UWSP at Wausau Center for Civic Engagement Theatre

REGISTER >>>

Tara Draeger
LIFE Report Chair and Director of System Community Health at Aspirus Health will give an overview of the 2023 LIFE Report Calls to Action.

Paul Schmitz
CEO of Leading Inside Out will walk through the approach of "Everyone Leads; Building the Culture for Collective Impact."

MARATHON COUNTY EMPLOYEES CREDIT UNION

PLEASE JOIN US

Annual Meeting INVITATION

TUESDAY, JUNE 13 2023

DOORS OPEN AT 4:30 PM
MEETING TO BEGIN AT 5:30 PM

GREAT DANE PUB & BREWING CO
2305 SHERMAN ST, WAUSAU

RSVP 715-261-7680

Dinner to Follow Meeting
Cost \$10 per person

ALL ATTENDEES WILL RECEIVE A GIFT JUST FOR JOINING US!
PLUS A CHANCE FOR WINNING ADDITIONAL DOOR PRIZE DRAWINGS

JUNETEENTH

Freedom Day

Saturday, June 17th

Celebrate in Wausau at Whitewater Music Hall

5 PM-9 PM

venmo

FREE FILM VIEWING OPPORTUNITY

Brought to You By: Marathon County AOD Partnership & Nicotine Prevention Alliance of Central WI

SCREENAGERS UNDER THE INFLUENCE

A film about how the tech revolution has reshaped adolescence and its effects on substance use.

ADDRESSING VAPING DRUGS & ALCOHOL IN THE DIGITAL AGE

WHEN: View Any Time June 4 – June 17

WHERE: On Demand | Register for Free [HERE](#) or Scan QR Code

AUDIENCE: Anyone May Attend, Including Youth 6th Grade & Up With Parents

Marathon County AOD Partnership
Nicotine Prevention Alliance of Central WI

Register online to view for FREE June 4 - 17 at <https://www.eventcombo.com/e/screenagers-under-the-influence-presented-by-marathon-county-68146>



Join Us for a Brat Fry!



Tuesday, May 30
10:30 am – 1:00 pm
Mount View Courtyard

Proceeds will go towards the Walk to End Alzheimer's
Please note: The Talent Show was canceled.

Hmong Wausau Festival

JULY 29-30, 2023

- People's Sports Complex**
602 E. Kent Street
Wausau, WI 54403
- (715) 842-8390
- hmongwausaufestival@gmail.com
- Vendor Coordinator**
Deborah Lee (715) 842-8390
deborahlee@hmongamericancenter.org

Logos for Western Wisconsin, Wausau Mountain, and Mt. Pisgah National Forest are also present.



Jayne Waksmonski, Food Services, gives an overview of the Employee Cafeteria to new employees at the May 15-18 orientation.

WAUSAU CAMPUS TOURS

Each Orientation Week at 10:20 on Tuesday

You may know that new employees receive a brief Wausau Campus tour on the Tuesday of each orientation week, but did you know any employee is welcome to join the tour? You sure are! We take a walking tour of Mount View Care Center, Aquatic Therapy Center, Crisis and in the near future, the new Administration areas in Suite A. Interested in joining? Next tours are June 6 and June 27 at 10:20 - 11:00 am from the Community Room at the MVCC Main Entrance. Join us!

North Central Health Care and Aspirus Women's Health have teamed up to offer your annual mammogram right onsite!

July 13, 2023
appointment is required



3D mammography is available and covered by North Central Health Care's Health plan benefits.

- Note: You will need 3D CPT codes: screening mammogram 77067 and 77063

For an appointment, call Aspirus Central Scheduling at 866.672.5133. Tell them you want a North Central Health Care appointment. An order from your health care provider is not needed.

You will be asked to provide:

- The name of your physician or nurse practitioner to receive results
- Insurance information
- The location(s) of your prior mammograms





MVCC: SUITE A FIRST FLOOR HALLWAY & ELEVATOR ACCESS CLOSED TO/FROM TOWER

DOOR 1 ENTRANCE AND ELEVATOR TO 2 NORTH TO REMAIN OPEN

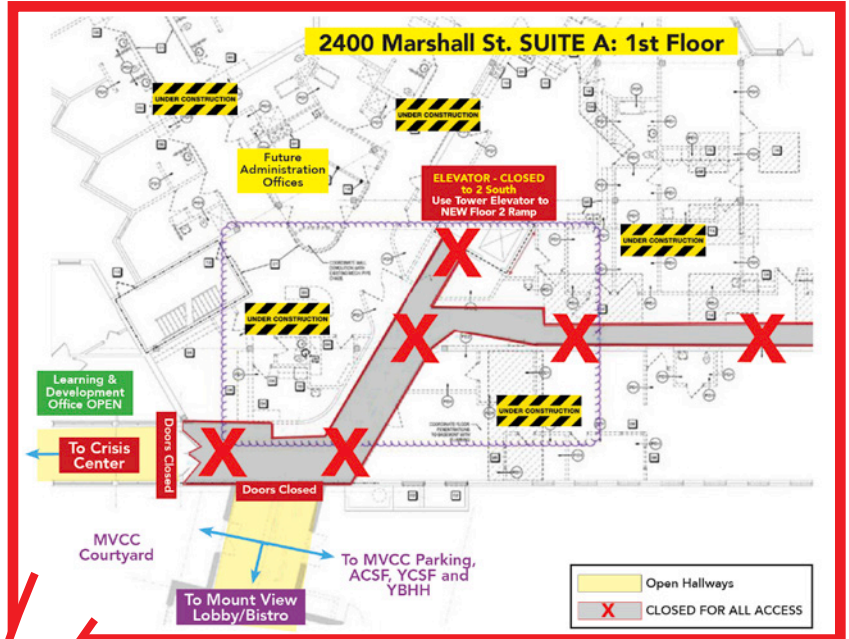
Effective May 10, 2023

Beginning May 10, construction crews will be closing down 1st floor access to the hallway connecting Suite A and Suite B, as well as the South Elevator in Suite A (Old MVCC). Additionally, all residents in 2 North were relocated to 2 South. 2 North will be closed for renovations, however Door #1 will remain open to allow visitors to access the 2 North Elevator to see residents in 2 South.

Make sure you take a walk and pre-plan your access across the Campus. This will help with emergency response times and rainy-day movement between buildings.

VISITORS to 2 South: The front door of Suite A (Door 1) will remain open during visiting hours (7 am – 7 pm M-F and 10am – 6 pm on weekends/holidays) for staff, visitors and residents. Please use the 2 North elevator to enter and exit 2 South.

EMPLOYEE EMERGENCY RESPONSE: Employees may walk outside through MVCC Courtyard to cross the Campus. Employees may also walk through Employee Cafeteria via hallway access and in/out MVCC Main entrance. There will be no access through the double doors at the stairwell past the Physical Therapy Center or near Learning & Development in Link Hallway. To access 2 South on second floor of MVCC, you may use Door #1 and use the 2 North Elevator OR Enter the main MVCC entrance at Door #5 and use ramp on 2nd floor connecting Floor 2 of Tower and 2South.



- A** NCHC Main Campus Entrance (Door 23)
- B** Administration Offices
- C** Outpatient Services / Day Treatment
- D** Community Treatment (Main Office)
- E** Aquatic Therapy Center (Suite C)
- F** Marathon County Health Department
- G** Employee Health & Wellness Center
- H** Social Services
- I** Mount View Care Center Main Entrance (Suite B - All Visitors Entrance)
- J** The Bistro & Gift Shop
- K** MVCC Administration Offices
- L** Physical Therapy Center
- M** Community Room
- N** Mount View Courtyard
- O** Volunteer Services
- P** Suite A: Door 1 - Elevator Open to 2 South
- R** 1st Floor (Under Construction) CLOSED
- 2 South (2nd Floor - Enter At Door 1: Suite A or Door 5 - Use elevator)
- 2 North (2nd Floor - Construction - CLOSED)
- S** Adult Behavioral Health Hospital (Floor 1)
- T** Crisis Center (Door 58)
- U** Adult Crisis Stabilization (2370 Marshall)
- V** Youth Crisis Stabilization (2370 Marshall)
- W** Youth Behavioral Health Hospital (2380 Marshall)
- Rx** Human Resources
- @** Purchasing
- \$** Cashier
- Rx** Pharmacy
- ☺** Employee Cafeteria





Position Postings

Title: Hospitality Assistant

Status: Full Time – Night Shift, No Weekends

Location: Pine Crest, Merrill

Under the supervision of a facility Life Enrichment Coordinator, the Hospitality Assistant provides basic assistance to residents and maintains a safe and clean environment. 0.8 FTE (64 hours per pay period)

Shifts Available:

NOC Shift Full-Time
Opening schedule is Monday - Friday,
10:00 pm - 6:30 am hours

Apply Online: <https://bit.ly/435Wite>

Several Opportunities Available for Employees Working in Merrill at the Merrill Center and at Pine Crest - Search by Location!



Not sure if its the right fit? Check out the Realistic Job Preview at www.norcen.org/RJP

NCHC THERAPIST RECEIVES SCHOLARSHIP TO ATTEND INAUGURAL HARM REDUCTION CONFERENCE IN GREEN BAY Congrats Laure Ann Blanchard!

Outpatient Therapist, Laure Ann Blanchard, recently received a scholarship to attend the inaugural Harm Reduction Conference taking place in June of 2023 in Green Bay. The goal of the conference is to bring together experts in the field of harm reduction along with others interested in learning about and expanding harm reduction services, resources, and policies. This opportunity will provide a chance to build relationships with stakeholders involved in the advancement of harm reduction in the state. For two days, participants will come together to discuss and address the complex issues facing the harm reduction movement.



"I am excited to bring back information to share and provide training with our team at NCHC."

– Laure Ann Blanchard, MS LPC NCC SUD SPECIALTY



Let's talk retirement

What to bring to your one-on-one meeting once enrolled:

- Wisconsin Retirement System statement
- Social Security statement
- Other retirement account information
- Current paycheck stub (if applicable)

WISCONSIN DEFERRED COMPENSATION PROGRAM

Talk with a Retirement Plan Advisor about the WDC Program!

Meeting with your WDC Retirement Plan Advisor is an easy way to help make sure your savings and spending strategy fits you and your future. Schedule a one-on-one appointment. Additional virtual meeting dates and times can be found at https://nc_wisconsin.timetap.com/#/.

Next meeting:

Individual Retirement Readiness Review with Shawn Bresnahan

Wausau Campus, Iris Room in Outpatient Services
Tuesday, May 23rd 2023 • 10am-3pm
1100 Lake View Drive
Wausau, WI 54403

Register Online at https://nc_wisconsin.timetap.com/



Scrub Sale!

at Mount View Care Center

Monday, June 5

1:00pm - 3:00pm

Payroll Deduction - Cash - Credit Card



Sign-up to get email reminders and a coupon to use on our next visit!



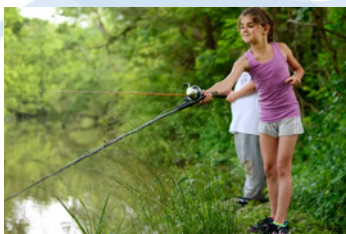
Can't scan the code above? Go to scrubsonwheels.com/remind-me and use the code below to sign up:

3ARXWN



Phone: 866-727-8273 Fax: 574-970-0382 www.scrubsonwheels.com

Can You Help Our Community Treatment Youth Program?



The NCHC Community Treatment Youth Skill Development Groups are in need of recreation items this summer!

We are looking for any donations of recreation equipment for:

- Tennis*
- Fishing*
- Baseball
- Disc golf, etc.



*Tennis and fishing equipment are in biggest demand.

Donations can be dropped off in the Wausau Campus Community Treatment Office by Wanda McCarthy at Door #24.



NERD ALERT

WEEKLY TECH TIPS FROM IMS

TIP: Utilizing the Information Systems Libraries Folder on O: Drive

PURPOSE: Understand the materials available to users

What is the Information Systems Libraries Folder?

The Systems Libraries Folder is a folder on the O: drive for NCHC staff to access additional resources with the applications used. Staff can find resources for each application such as Matrixcare, Cerner, PointClick-Care, Tier, and more.

Why is this relevant at NCHC?

Each folder contains document related to the application used at NCHC. For example, password reset instructions, workflow documents, forms, application release notes, and more.

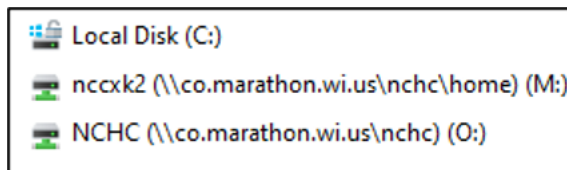
- Workflow documents provide instructions to use in an application for consistency.
- Release notes help users plan for new and updated changes.
- Forms in the folder are the most up to date.

How to access the Systems Libraries Folder

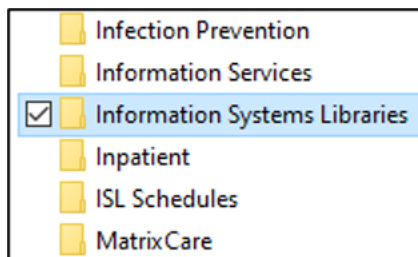
1. Click the **folder icon** on the bottom navigation bar.



2. Click on the **O: drive** located on the left side.



3. Click on **Systems Libraries** Folder.



Do you have a Tech Tip you would like to request?

Email us at communications@norcen.org and we can consult our experts in IMS to help with useful solutions and time-saving tips!

STAY TUNED FOR FUTURE TIPS!



WHAT'S FOR LUNCH?

WAUSAU CAMPUS EMPLOYEE CAFETERIA
OPEN TO ALL NCHC & WAUSAU CAMPUS



<p>BREAKFAST HOURS 8:30 AM – 11 AM</p>	<p>LUNCH HOURS MONDAY – FRIDAY 11:30 AM – 1:30 PM HOT FOOD BAR \$.45/OUNCE (Weekdays Only)</p>	<p>GRAB-N-GO HOURS MONDAY – FRIDAY 8:30 AM – 5:30 PM WEEKENDS: GRAB-N-GO ONLY</p>
---	---	--

MAY 22 – 26, 2023

	MONDAY	TUESDAY	WEDS	THURSDAY	FRIDAY
MAIN	Bratwurst on a Bun Potato Salad Seasoned Peas	Honey Mustard Chicken Rice Pilaf Pickled Beets	Pork Loin with Gravy O'Brien Potatoes Mixed Veggies	Macaroni 'n Cheese with Ham Green Beans	Homemade Chili Cheddar Biscuit Sweet Pepper Slaw
SOUP	TBD	TBD	Chicken Rice Soup	TBD	Cream of Broccoli Soup
DESSERT	Diced Watermelon	Frosted Chocolate Cake	Strawberry Yogurt Pie	Fruit Cobbler	Fruit Cup

MAY 29 – JUNE 2, 2023

	MONDAY	TUESDAY	WEDS	THURSDAY	FRIDAY
MAIN	CLOSED FOR HOLIDAY	Chicken Pasta Alfredo Beets Breadstick	Smoked Pork Loin with BBQ Sauce Baked Sweet Potato Buttered Peas	Ranch Meatloaf Baked Potato Wax Beans	Battered Rock Fish Tartar Sauce French Fries Creamy Coleslaw
SOUP		TBD	Garden Vegetable Soup	TBD	Vegetable Chowder
DESSERT		Peanut Butter Cup Blondie	Fruit Crisp	Diced Watermelon	Cherry Crunch

WAUSAU CAMPUS SUMMER FOOD TRUCKS



Mitch's Texas Tacos
Weekly on Thursdays*
May 18 through August 31



HANUMAN EXPRESS
Monthly on Fridays*
May 19 • June 23 • July 21 • Aug 18

* Dates are subject to change. Watch for notices via email and NYCU. Please note: Food trucks are independently operated and may cancel with little notice. We apologize for any inconvenience.



THE BISTRO

MONDAY - FRIDAY | 7:30AM - 3PM
HOT FOOD AVAILABLE UNTIL 2:30PM

PANINI OF THE WEEK



TUNA MELT

TUNA SALAD | TOMATO | CHEDDAR

LATTE OF THE WEEK



Cinnabon Latte

\$1 OFF LARGE LATTES EVERY MONDAY!

Ice Cream

- ICE CREAM CONE1.00
- ROOT BEER FLOAT2.00



LUNCH

- PANINI COMBO (1/2 PANINI, CHIPS, WATER)5.00
- TURKEY BACON GUAC PANINI6.00
- TURKEY BACON GUAC WRAP5.75
- 3 CHEESE PANINI (ADD CHICKEN FOR \$1)3.50
- GRILLED HAM & CHEESE PANINI 4.50
- GARLIC BACON PANINI 5.00
- CHICKEN BACON RANCH WRAP5.25
- CHEESE QUESADILLA (ADD CHICKEN FOR \$1)4.50
- CALZONE 4.50/5.00
- CHEF SALAD/CHICKEN SALAD5.50

**Please note: All sales subject to Sales Tax.*